



Tripod Data Systems
 345 SW Avery Ave
 Corvallis, OR 97333
 541.757-7254
 541.752.7133 Fax
 www.tdsway.com

TDS Nomad—Bluetooth cell as modem

AUG 2007

TDS cannot recommend a particular brand or model of cell phone. Cell phone models change rapidly, and their behavior can vary from one service area to another. If you are purchasing a cell phone for use as a modem with your Nomad, TDS recommends that you take the Nomad to the phone store and test the phone before you purchase it.

Overview

It is possible to use a Web-enabled Bluetooth cell phone as a modem so that the Nomad can connect to the Internet to send and receive email (including file attachments). You will need a dial-up account at an Internet Service Provider (ISP).

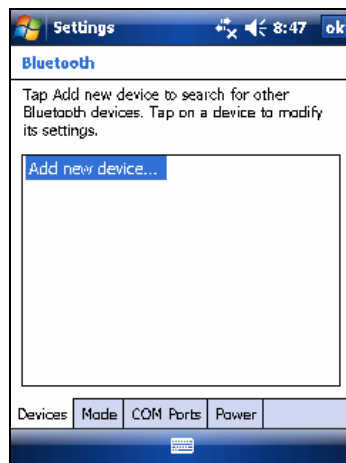
Note that sending and receiving file attachments via most Web-based email (such as Hotmail and Yahoo) is not supported by the Internet Explorer Mobile browser on the Nomad. However, the Nomad operating system includes a Messaging program which supports POP3, IMAP4 and SMTP email.

Configuring your Nomad

On the Nomad, choose **Start > Settings > Connections > Bluetooth > Mode**, and confirm that Bluetooth is enabled. It is not necessary for the Nomad to be visible to other devices.

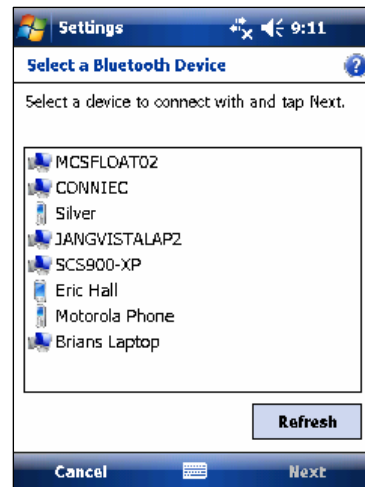
Follow the instructions which accompanied your cell phone to enable Bluetooth, and then configure your cell phone to be visible to other devices.

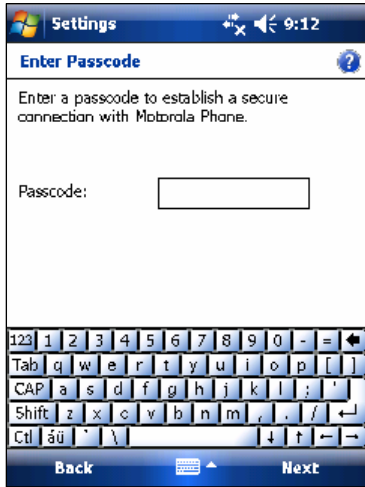
On the Nomad, choose **Start > Settings > Connections > Bluetooth** to open a window similar to the one below.



Tap on **Add new device...** and wait for several moments while the Nomad searches for Bluetooth devices in the vicinity.

A window similar to the one below will appear on your Nomad.





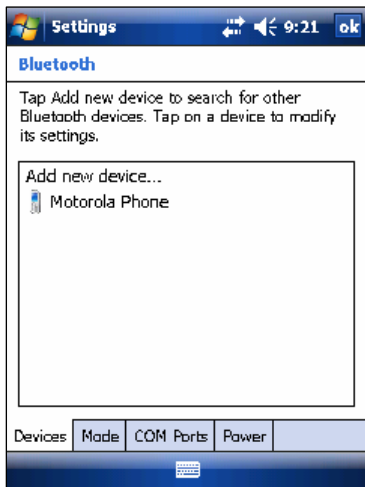
Select the cell phone from the list of devices and tap **Next**. You may be prompted to enter a passkey to establish a secure connection with the cell phone. Enter any passkey and tap **Next**.

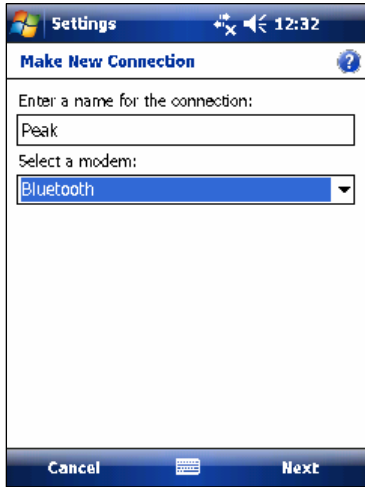
The cell phone will prompt you to enter a passkey; enter the same passkey that you entered on the Nomad.

Once the cell phone and Nomad have established their Bluetooth connection, the Nomad will display a window which allows you to enter a display name for the cell phone and to select which services to use. Modify the display name as desired, and tap **Finish** to exit the wizard.



The cell phone will appear in the list of Bluetooth devices which are recognized by the Nomad.



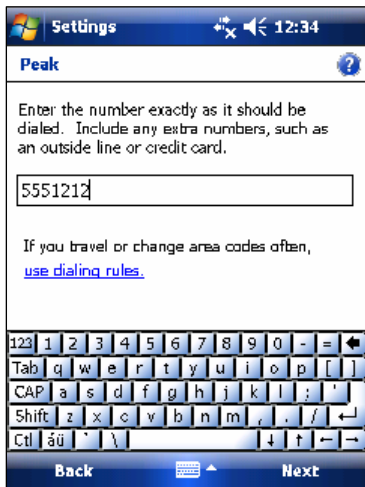


To configure the dial-up connection on the Nomad, choose **Start > Settings > Connections > Connections > Add a new modem connection**. Assign the connection an appropriate name, and select Bluetooth from the modem dropdown list. Tap **Next**.

The Nomad will ask you which Bluetooth device you want to use for this connection. Select the cell phone from the list and tap **Next**.



The Nomad will prompt you to enter a phone number to dial. Enter the phone number which was provided by your Internet Service Provider (ISP) and tap **Next**.





The Nomad will prompt you to enter a user name and password. Enter the user name and password that were provided by your ISP. Typically you do not need to enter a domain, and there is usually no need to modify the settings under **Advanced**.

Tap **Finish** to complete the New Connection wizard.

To connect to the Internet, choose **Start > Settings > Connections > Connections > Manage Existing Connections**. Touch and hold on the connection and choose **Connect** from the menu which appears.

Wait several moments while the connection is established. From here, you can launch Internet Explorer Mobile (**Start > Internet Explorer**) on the Nomad and browse the Internet. Alternatively, you can launch the email client program on the Nomad (**Start > Messaging**) and configure a POP3 or IMAP4 email account using the settings provided by your Internet Service Provider.

