



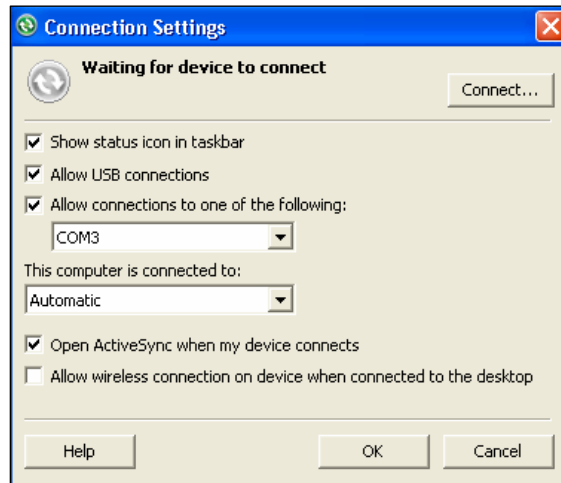
Tripod Data Systems  
 345 SW Avery Ave  
 Corvallis, OR 97333  
 541.757-7254  
 541.752.7133 Fax  
 www.tds way.com

## TDS Nomad – Communication

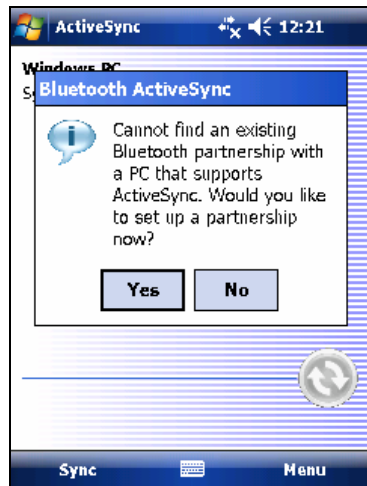
AUG 2007

### ActiveSync Bluetooth to pre-Vista PC

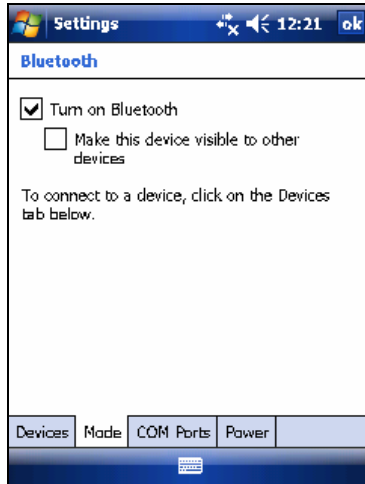
A TDS Nomad™ which is equipped with integrated Bluetooth can communicate with a PC over an ActiveSync Bluetooth connection. To establish an ActiveSync Bluetooth connection with your Nomad, confirm that ActiveSync 4.5 or later is installed on the PC. The PC must be Bluetooth-enabled and configured to be Discoverable (visible to other Bluetooth devices). Open ActiveSync on the PC, and choose **File > Connection Settings**. Confirm that serial connections are enabled, and select the COM port that corresponds to the COM port associated with Bluetooth on the PC.



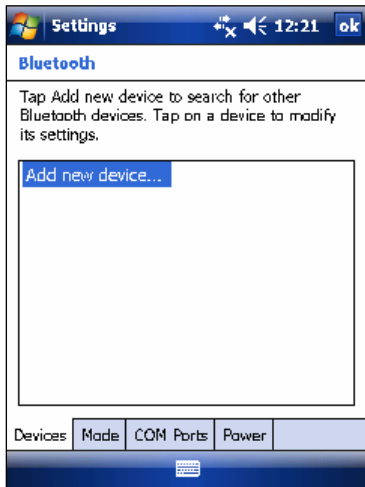
On the Nomad, choose **Start > Programs > ActiveSync > Menu > Connect via Bluetooth**. The Nomad will offer to set up a new Bluetooth partnership; choose **Yes**.



The Nomad will open a Bluetooth settings window similar to the one below.



Confirm that Bluetooth is enabled on the Nomad. It is not necessary for the Nomad to be visible to other Bluetooth devices. After confirming that these settings are correct, tap on **Devices** to open a window similar to the one below.



Tap on **Add new device...** and wait a few moments while the Nomad searches for Bluetooth devices in the vicinity. A window similar to the one below will appear on the Nomad.



Select the PC from the list of devices and tap on **Next**. Your Nomad will open a window prompting you to enter a passkey.



Enter any passkey and tap on **Next**. The PC will prompt you to enter a passkey; enter the same passkey which you entered on the Nomad. The Nomad will then display a window showing you the Bluetooth partnership settings.



Tap **Finish** to complete the creation of the Bluetooth partnership.

Once the Bluetooth partnership is created, a Bluetooth ActiveSync connection can be established by choosing **Start > Programs > ActiveSync > Menu > Connect via Bluetooth**.