

---

**RS232/RS422  
A760/A760T/A770  
INSTALLATION GUIDE**

---

Prepared By: \_\_\_\_\_  
Reviewed By: \_\_\_\_\_  
Reviewed By: \_\_\_\_\_  
Reviewed By: \_\_\_\_\_  
Reviewed By: \_\_\_\_\_  
Approved By: \_\_\_\_\_

**P/N: 799001123002**

**R02**



---

**RS232/RS422  
A760/A760T/A770  
INSTALLATION GUIDE**

---

**P/N: 799001123002**

**R02**



## Table of Contents

---

### Chapter 1 Introduction

---

1.1	Introduction .....	1
1.2	Features .....	2
1.3	Specifications .....	2
1.4	Pin Assignments.....	2



## Chapter 1 Introduction

### 1.1 Introduction

The RS-232/RS-422 card can provide two RS-232/RS-422 serial ports.

Equipped with the industrial standard 16C552 asynchronous communication chip, this card features full programmable serial interface characteristics. The Figure 1 shows the RS-232/RS-422 Board in the notebook computer.

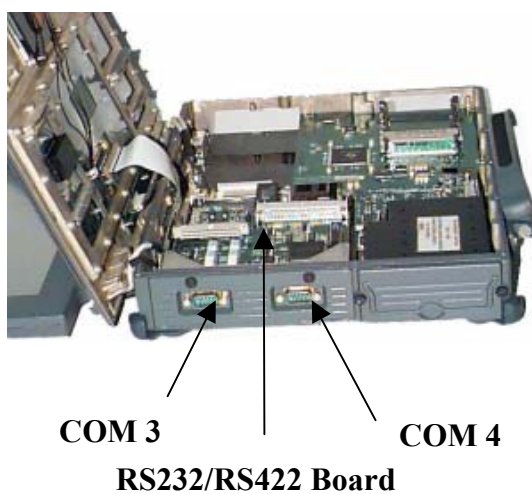


Figure 1 RS-232/RS-422 Board

## **1.2 Features**

- Two independent RS-232/RS-422 serial ports

- Transmission speeds up to 115 KBPS

## **1.3 Specifications**

- Ports: 2
- UART: 2 X 16C552 with 16-byte FIFO
- Signals supported:  
RS-422: TXD+, TXD-, RXD+, RXD-
- Signals supported:  
RS-232: DCD#, RXD, TXD, DTR#, DSR#, RTS#, CTS#
- I/O addresses: 2E8, 3E8
- IRQ: 3, 4, 5 (Default), 11 (Default)
- Connectors: Dual DB-9 male connectors
- Operating temperature: 32 to 122°F (0 to 50°C)

## **1.4 Pin Assignments**

The following Table1, Table 2 shows the pin assignments for the card's DB-9 connectors in RS-232/RS-422 mode.

**Table 1 RS-232 (J2/J3) Pin Assignments**

<b>Pin No</b>	<b>Pin Name</b>	<b>Description</b>
1	NC	No Connection
2	DCD#	Data Carrier Detect
3	RXD	Receive Data
4	TXD	Transmit Data
5	DTR#	Data Terminal Ready
6	DSR#	Data Set Ready
7	RTS#	Request To Send
8	CTS#	Clear To Send
9	RI	Ring Indicator
10	GND	Ground
11	NC	No Connection
12	GND	Ground

**Table RS-422( J2/J3) Pin Assignments**

<b>Pin No</b>	<b>Pin Name</b>	<b>Description</b>
1	NC	No Connection
2	TXD-	Send Data-
3	TXD+	Send Data +
4	RXD+	Receive Data +
5	RXD-	Receive Data-
6	RTS-	Request To Send-
7	RTS+	Request To Send+
8	CTS+	Clear To Send+
9	CTS-	Clear To Send-

**NOTE**

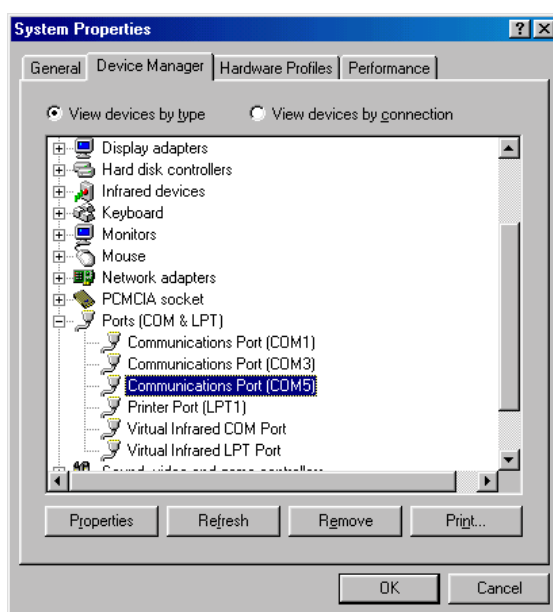
The “NOTE” issue for A760 Series only.

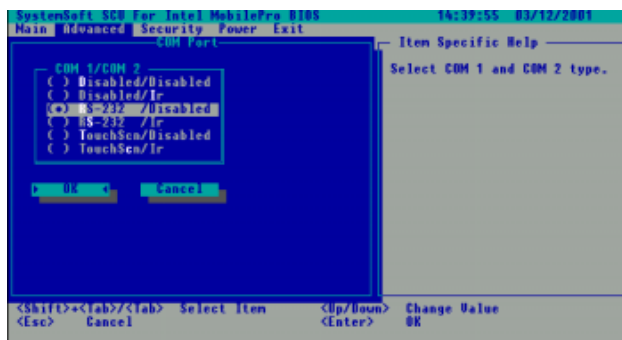
Due to COM port issue after install RS-232/RS-422 & RS-485 under Windows 98, COM port has to be reset up correctly.

Please follow the procedures below to do the set up.

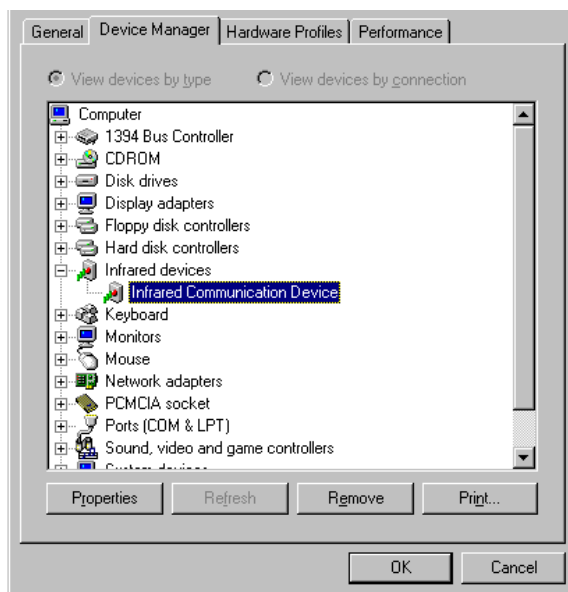
Step 1. Restart your computer.

2. Press F2 to enter SCU\Advanced\COM Port, select RS-232/Disabled and select Exit\”Save Changes and Exit”.

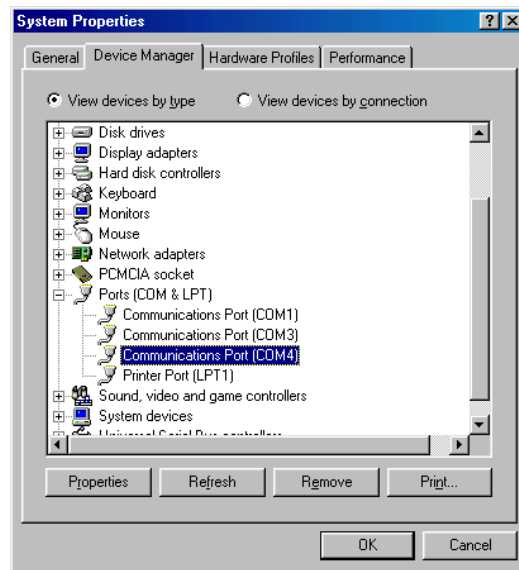




- 3. During Post, press “F8” and select “ Save Mode”.
- 4. Remove “Infrared devices” & COM 5



5. Restart computer to access COM port. ( IR will be disabled and COM 4 will be released after reboot.)

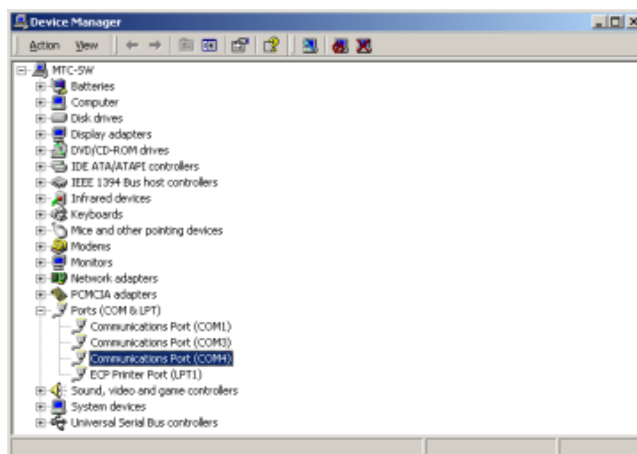


**A770:**

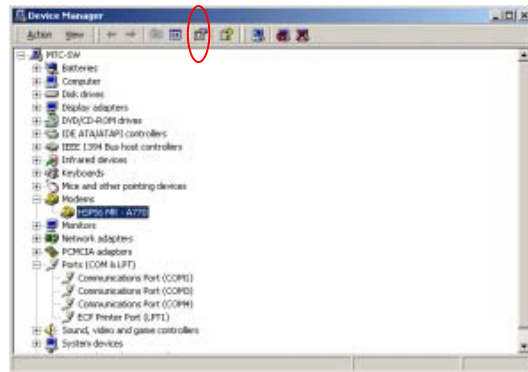
COM port setting for Windows 2000/Windows XP :

If modem COM ports resource with COM4 of the Bay 2 conflict, and than you must be changed COM port settings, you can follow step as below:

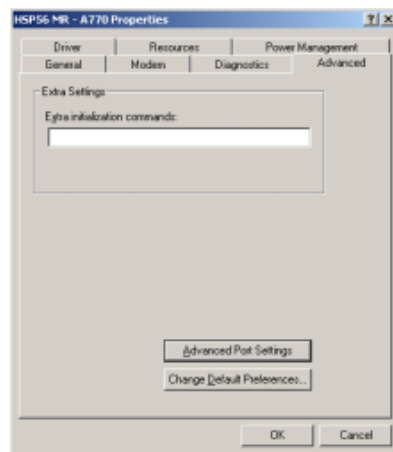
1. Select Start\Settings\Control Panel\ System \Hardware\Device Manager, the screen will appear as below.



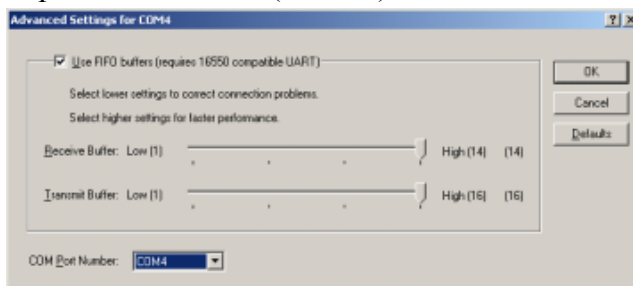
2. Select \Device Manger\Modems\HSP56 MR-A770.



3. Click on “Advanced” , “Advanced Port Settings” and click “OK” button.



7. When “Advanced Settings for COM4 Port” screen will appear, and then you adjust COM port COM 4 after (No use ) and click “OK”.



For Example:

